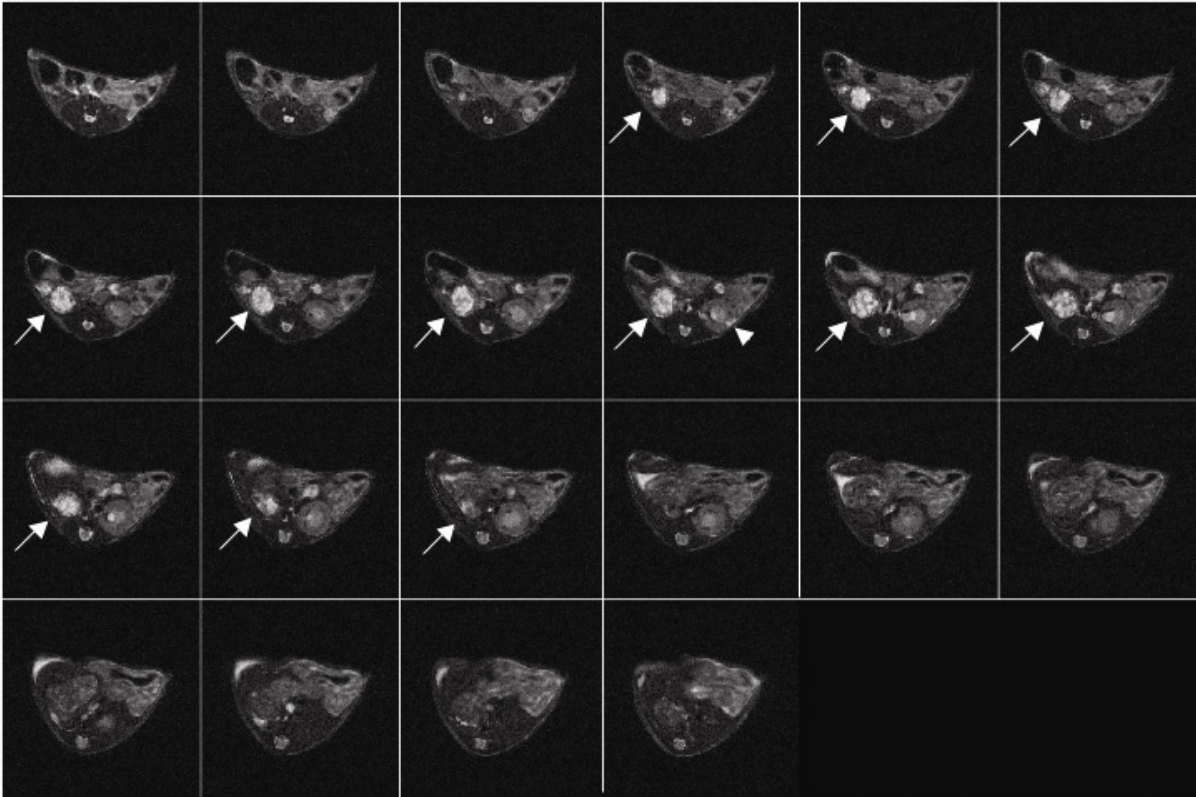


### **Legend to Supplementary Figure**

**Supplementary Figure 1.** Serial MRI sections depict extensive cystic lesions in ischemic (left) but not contralateral non-ischemic (right) kidney in an *Mx1Cre<sup>+</sup>Pkd1<sup>flox/flox</sup>* mouse at 6 weeks after IRI. Arrow points to the ischemic kidney. Arrowhead shows focal cyst in contralateral kidney.

**Supplementary Figure 2.** Rapid cystogenesis in mice with adult inactivation of *Pkd1* after renal injury. Representative H&E stained sections of injured kidneys from IKO mice show tubule dilatation at 1 week after IRI (a and b) and small cyst formation at 2 weeks after IRI (c and d).

Supplementary Figure 1



Supplementary Figure 2

